

MONTHLY MEMBERSHIP PROGRESS REPORT

LOCATION MINNESOTA

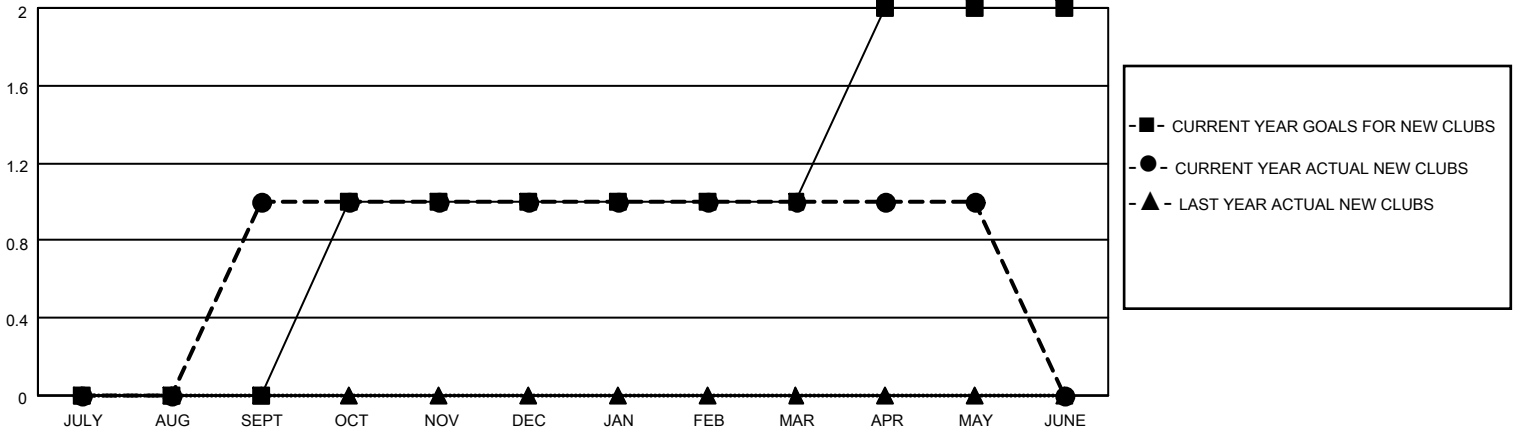
District 5M 7

Results as of: 5/31/2021

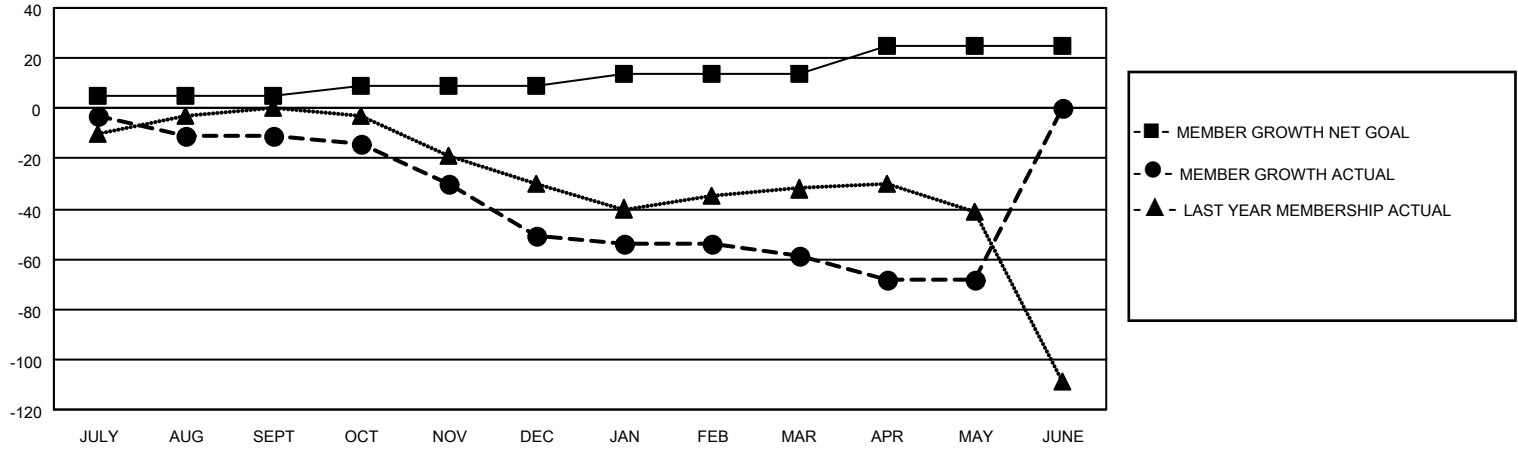
Clubs			
RESULTS FOR 2020-2021			
QUARTER	NEW CLUB GOAL	NEW CLUBS	DROPPED CLUBS
JULY/AUG/SEPT	0	1	0
OCT/NOV/DEC	1	0	1
JAN/FEB/MAR	0	0	0
APR/MAY/JUNE	1	0	0

Members			
RESULTS FOR 2020-2021			
QUARTER	MEMBER GROWTH NET GOAL	MEMBER GROWTH ACTUAL	DROPPED MEMBERS ACTUAL (including transfers)
JULY/AUG/SEPT	5	48	55
OCT/NOV/DEC	4	19	55
JAN/FEB/MAR	5	11	18
APR/MAY/JUNE	11	11	19

GOALS AND ACTUAL NEW CLUBS CUMULATIVE



GOALS AND ACTUAL MEMBERS CUMULATIVE



DROPPED CLUBS: 1

28 CLUBS OF 53 ADDED 1 OR MORE NEW MEMBERS

<u>GENDER DISTRIBUTION</u>	
MALE	1,261 (72.02%)
FEMALE	490 (27.98%)

<u>DROPPED MEMBERS</u>	
DECEASED	24
CLUB CANCELLED	9
OTHER	114
TOTAL	147

[CLICK HERE FOR CUMULATIVE MEMBERSHIP DATA](#)

TOTAL FAMILY UNIT MEMBERS	321
FAMILY MEMBERS PAYING HALF DUES	166